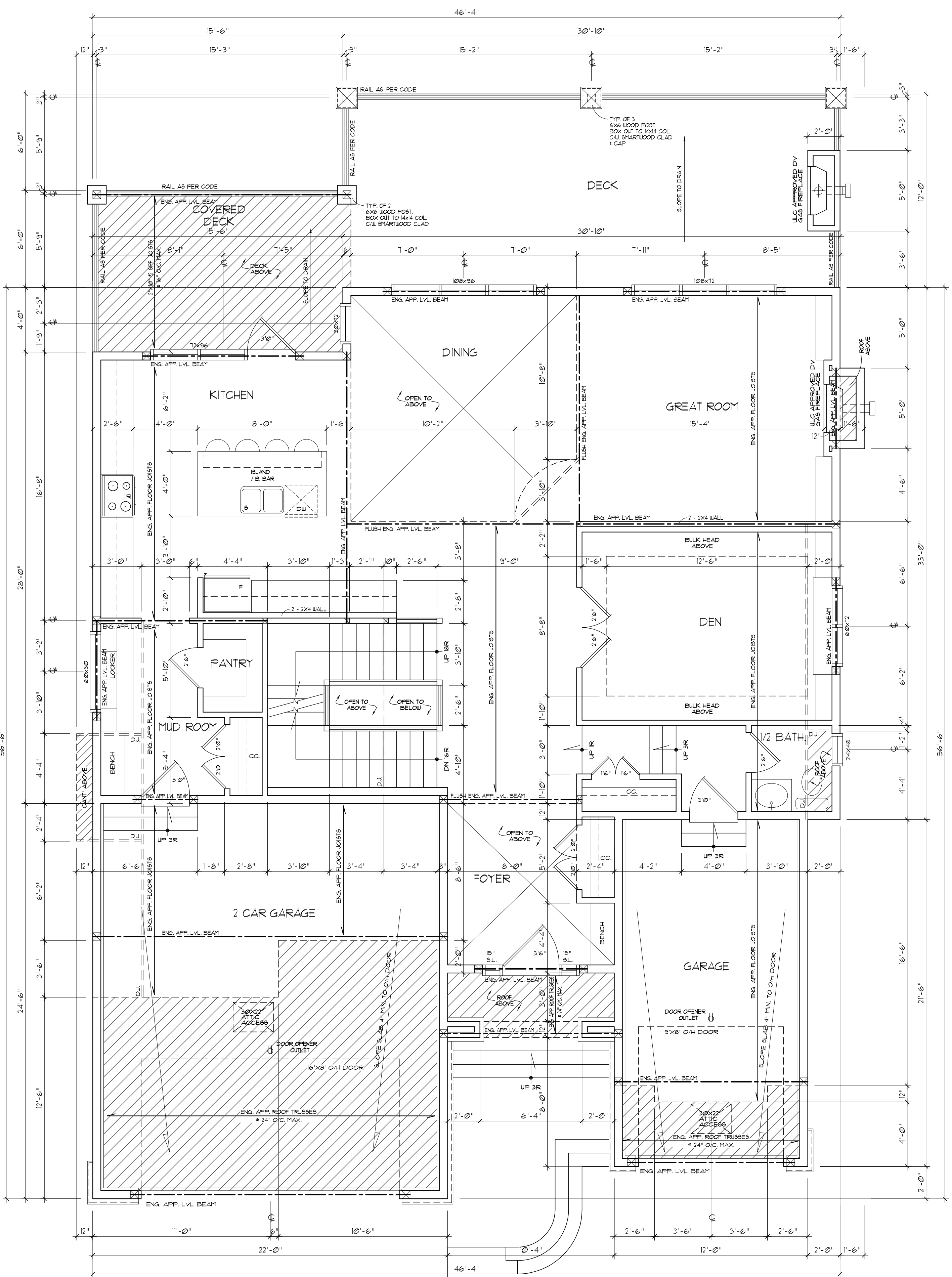


FOOTING SCHEDULE

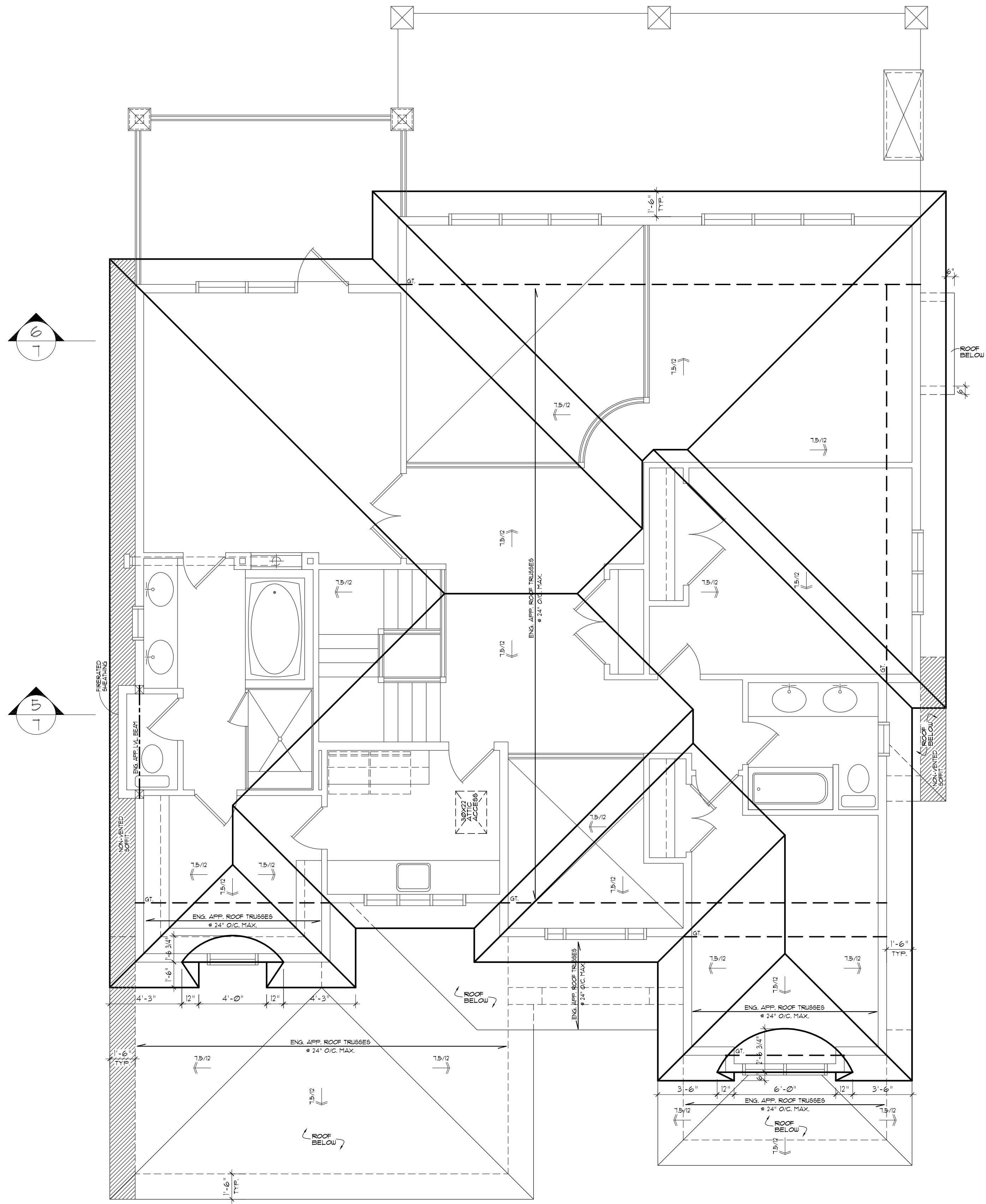
- A** ADJUST STEEL COL. ON PAD FOOTING. SEE STRUCTURAL FOR FOOTING SPEC. AND DETAILS.
- B** 4"x4" WOOD POST ON PAD FOOTING. SEE STRUCT. FOR FOOTING SPEC. AND DETAILS.
- C** 2"x4" BEARING WALL ON STRIP FOOTING. SEE STRUCTURAL FOR FOOTING SPEC. AND DETAILS.
- D** 12"x12" CONC. PIER ON PAD FOOTING. SEE STRUCTURAL FOR PILE #1 FOOTING SPEC. AND DETAILS.
- E** 8" CONC. RET. WALL ON CONC. STRIP FOOTING. SEE STRUCTURAL FOR REINFORCING #1 FOOTING SPEC. AND DETAILS.

NOTES: SEE STRUCTURAL ENGINEER DETAILS FOR COLS. # PAD FTG. SIZES AND REINFORCING INFO. CONFIRM COL. LOADS WITH FLOOR TRUSS SHOP DRGS.

BASEMENT PLAN 1/4" = 1'-0"
DEVELOPED FLOOR AREA 1288 SQ.FT.



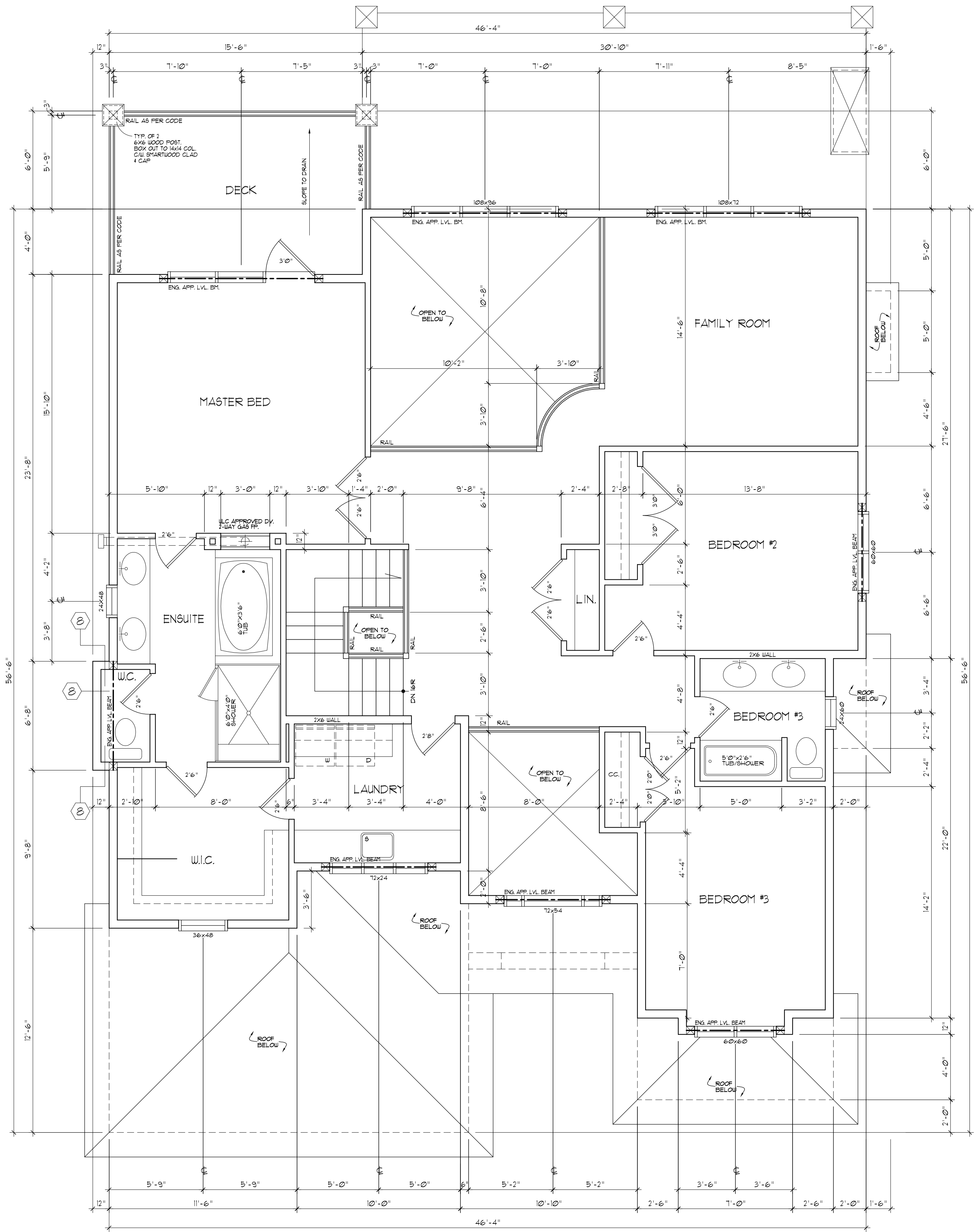
MAIN FLOOR PLAN 1/4" = 1'-0"
FLOOR AREA 1536 SQ.FT.
GARAGES 181 SQ.FT.



ROOF PLAN 1/4" = 1'-0"

NOTES: ALL ROOF SLOPES AND ROOF TRUSS DESIGN TO BE VERIFIED BY TRUSS MFG. PRIOR TO CONSTRUCTION. PROVIDE SHOP DRAWINGS FOR APPROVAL.

NOTES: SEE FLOOR PLANS FOR ADDITIONAL INFORMATION AND DIMENSIONS



UPPER FLOOR PLAN 1/4" = 1'-0"
FLOOR AREA 1675 SQ.FT.

NOTES: SEE ROOF PLAN FOR ADDITIONAL ROOF STRUCTURE INFORMATION